



# IMPORTANT

## YOU MUST FOLLOW THESE USER INSTRUCTIONS TO USE THIS VERSAPAK DOPING CONTROL KIT *FOR BLOOD*

### INTRODUCTION

Welcome to the user instructions for doping control officers (DCO); **CLOSING** the Versapak Doping Control Kit *for Blood*.

 Please read all instructions carefully.

 Register and download further information regarding use, video training and instructions in other languages.

- *Pour voir et télécharger des instructions dans d'autres langues, visitez:*
- *Anweisungen zum Herunterladen und Herunterladen von Anweisungen in anderen Sprachen finden Sie unter:*
- *Para ver y descargar instrucciones en otros idiomas, visite:*

[www.versapak-anti-doping.com](http://www.versapak-anti-doping.com)

### INDICATIONS FOR USE

- The Versapak Doping Control kit is to be used by approved, authorised Doping Control Officers and Laboratories as per the '**International Standards for Testing and Investigations (ISTI)**'.
- The Versapak Doping Control kit is to be used for the 'tamper evident' storage and transportation of human specimens (Urine & Blood).
- The Versapak Doping Control kit is to be used in accordance with this user instruction manual.

### PRIOR TO USE

If you have not already checked the packaging label 'Use By' date, we advise you check before proceeding. **Do not** use this product if the date has passed.



**WARNING:** The box this product was supplied in features a void label. If there is any evidence that the box void label had been opened or tampered with before, **do not continue to use the kit**, contact your organisation manager for instructions.

# CONTENTS

Please check the contents and ensure the kit is intact.

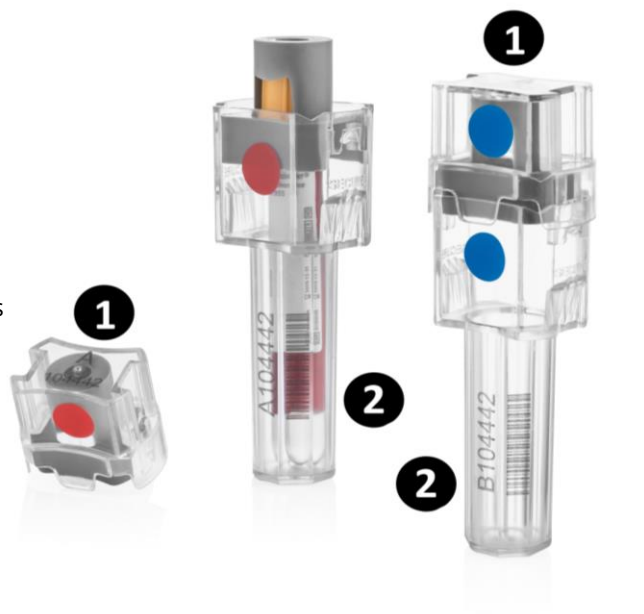
1. Two 'tamper evident' security canister bases (one blue, one red, uniquely numbered)
2. Two 'tamper evident' security lids (one blue, one red, uniquely numbered) with two grey metal cap inserts
3. Two leak-proof bags containing absorbent pads
4. User Instructions
5. 12x barcode labels



Please ensure that all kit components have matching serial numbers (Fig b):

1. On the lids
2. On the base

Fig b. Matching serial numbers



**NOTE:** If you have any doubts as to the integrity of your kit, do not use, contact your organisation manager.

## GETTING STARTED

- Collect the blood sample according to Annex E of the ISTI, you can find additional Versapak Blood Collection Accessories by visiting our website at: [www.versapak-anti-doping.com/blood-collection-accessories](http://www.versapak-anti-doping.com/blood-collection-accessories)

## CLOSING

- Place each vacutainer into their corresponding canister base. Place one vacutainer inside A (Red) canister and the other vacutainer inside B (Blue) canister.



3ml, 5ml and 10ml vacutainers can be inserted into the Versapak Blood Kit

- Insert the grey cap into each canister lid (Red/Blue) and place over the corresponding canister bases by lining up the coloured dots (**fig c**) and press firmly down with either side of your hands, until you CLEARLY hear the closing clicks.

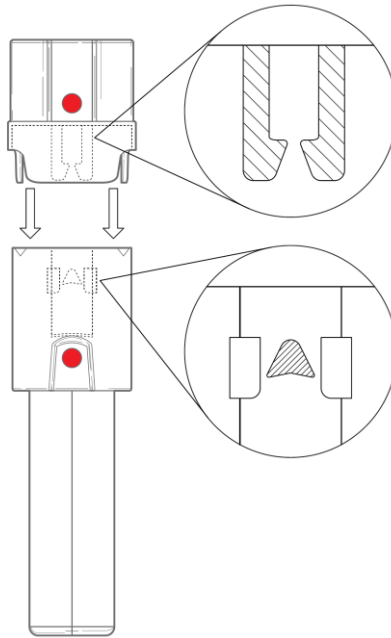


Fig c. Illustration of closing the lid

- Visually check both sides of the canister and ensure (1) locking legs are in place, underneath the (2) locking mechanism (**fig d.**)
- Pull gently of the lid and base to see they are locked evenly

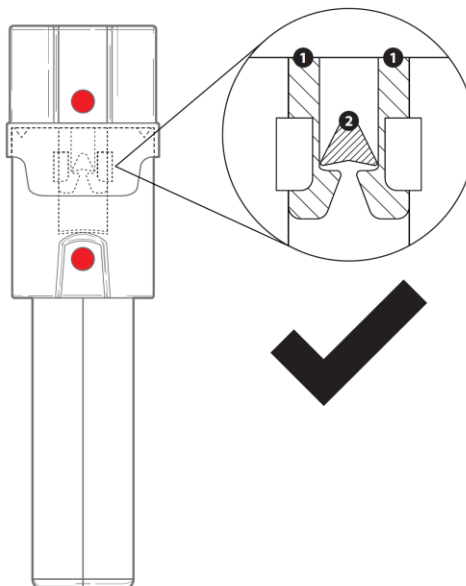
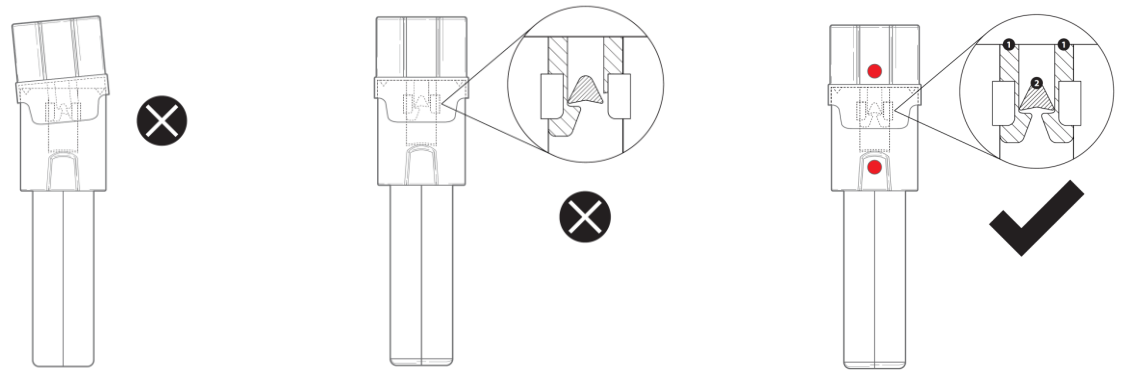


Fig d. Illustration of closed lid



**WARNING.** The following illustrates incorrect locking. Ensure your locking mechanism is correctly in position and all legs are in place.



Your Versapak 'tamper evident' blood canister is now secure and ready for storage/transport.



**IMPORTANT:** Versapak canisters are 'tamper evident'. To ensure safe and secure transportation, all canisters and samples must be handled with care and in accordance with these user instructions.

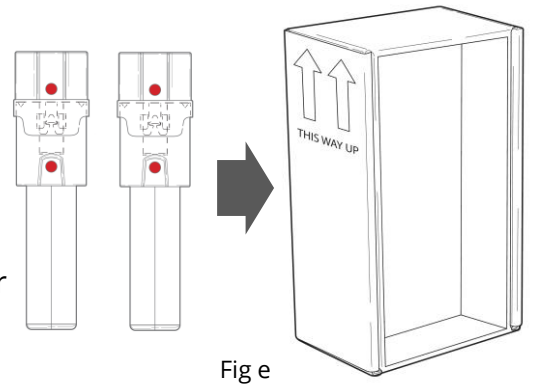


**IMPORTANT:** The DCO is responsible for the correct collection and checks to ensure that the Versapak kit is completely and securely fastened in according with section 6.3.4, annex D & E of the ISTI 2019.

- Place the A canister into one of the leak-proof bags with an absorbent pad, as provided and seal closed. Repeat with the B canister.

Use only one canister and absorbent pad per bag

- Finally, place both A & B canisters back in the packaging they were supplied with (fig e).
- Close and seal the transport box with the tamper evident sticker provided so it is ready for transportation.



To comply with regulations for transporting human specimens, we recommend you use Versapak Secure Holdalls that conform to UN3373 and P650 when sealed with a Versapak T2 Security Seal. Our holdalls can transport multiple boxes of samples collected. Visit our website to view the full range. [www.versapak-anti-doping.com](http://www.versapak-anti-doping.com)

- Place boxes within the Versapak Doping Control Holdall (fig f.). Make sure boxes stand upright and use supplied dividers where required.



Fig f.  
Box upright within the Versapak Holdall

- Close and seal the carrier as illustrated in **fig g.** to be UN3373 compliant.

Fig g. Closing and sealing the Versapak T2 locking mechanism



### DO'S & DON'TS

- When handling samples, please take the necessary precautions, wear the correct protective clothing and gloves when handling samples.
- Once closed, the canisters are to be placed in the packaging they were supplied with.
- **Do not** leave canisters in direct sunlight.
- Once closed, **do not** attempt to reopen. Only qualified laboratories are permitted to open the sample kits and have the necessary tools required.



**N.B. Only qualified Doping Control Officers should handle specimen collection and transportation to the laboratory. If you are in any doubt how to use the kits, do not attempt to use, contact your organisation manager.**



Register and download further information regarding use, video training and instructions in other languages.

- *Pour voir et télécharger des instructions dans d'autres langues, visitez:*
- *Anweisungen zum Herunterladen und Herunterladen von Anweisungen in anderen Sprachen finden Sie unter:*
- *Para ver y descargar instrucciones en otros idiomas, visite:*

[www.versapak-anti-doping.com](http://www.versapak-anti-doping.com)

**PLEASE NOTE these instructions supersede any previous versions.**

**Rev 3**

**versapak**<sup>®</sup>  
Doping Control Limited

Versapak Doping Control Ltd. 4 Veridion Way, Erith, Kent DA18 4AL

Tel: +44 (0)20 83 33 53 20

Email: [info@versapak-anti-doping.com](mailto:info@versapak-anti-doping.com)

[www.versapak-anti-doping.com](http://www.versapak-anti-doping.com)